

## 2016 COMMISSIONERS

Grace Kim, Chair  
Kara Martin, Vice-Chair  
Michael Austin  
Keiko Budech  
Eileen Canola  
Lauren Craig  
Molly Esteve  
Sandra Fried  
Jake McKinstry  
Tim Parham  
Marj Press  
Julio Sanchez  
David Shelton  
Lauren Squires  
Jamie Stroble  
Patti Wilma  
Spencer Williams

## MISSION & DUTIES

The Seattle Planning Commission advises the Mayor, City Council and City departments on broad planning goals, policies and plans for the physical development of the City. The Commission's work is framed by the Comprehensive Plan and its vision for Seattle into the 21st Century, and by a commitment to engaging citizens in the work of planning for and working to reach these goals.

The Seattle Planning Commission is an independent, 16-member advisory body appointed by the Mayor, City Council, and the Commission itself. The members of the Commission are volunteers who bring a wide array of expertise and a diversity of perspectives to these roles.

## STAFF

Vanessa Murdock, *Executive Director*  
Valerie Kinast, *Interim Director*  
John Hoey, *Senior Policy Analyst*  
Katy Haima, *Policy Analyst*  
Robin Magonegil, *Administrative Staff*

# 2016

ANNUAL REPORT

# SEATTLE PLANNING COMMISSION

## CONTACT US

700 5th Ave Suite 2000; PO Box 94788 Seattle, WA. 98124-7088  
Tel: (206) 684-8694, TDD: (206) 684-8118, Fax: (206) 233-7883  
[www.seattle.gov/planningcommission](http://www.seattle.gov/planningcommission)



# 2016 HIGHLIGHTS

## Racial and Social Equity in *Seattle 2035*

Early recommendations helped guide the plan to integrate equity throughout each plan element and use the Equity Analysis to directly inform the goals and policies.

## Comprehensive Plan & MHA

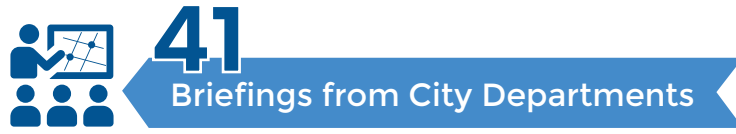
Urban village expansions based on a 10-minute walkshed are included in *Seattle 2035* and part of the proposal for MHA implementation, which the SPC has advocated for in our 2010 *Seattle Transit Communities* Report.

## Backyard Cottages

SPC recommendations were included in legislation, such as allowing both ADU and DADU, removing parking requirements, and revising development standards.

## Family-sized Housing

We advocated for policies included in *Seattle 2035* and in the HALA recommendations that emphasize the need for family-sized housing. This topic has been central to MHA implementation.



Commissioners spent 41 hours as volunteers on related advisory committees and panels.

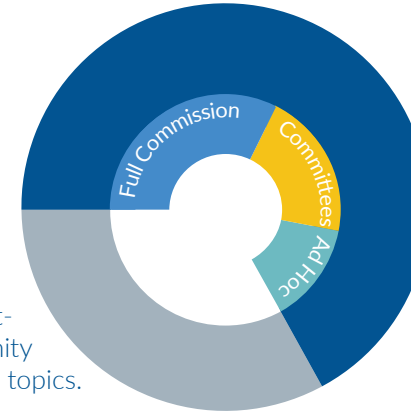
- Parks District Panel
- HALA Focus Groups
- Light Rail Review Panel
- Design Review Program Improvements Advisory Group
- Right of Way Improvements Manual Advisory Committee



**910** meeting hours

**452** related work

Commissioners spend time preparing for meetings, attending community events, and researching topics.



The Planning Commission has a Housing and Neighborhoods Committee, Land Use and Transportation Committee, and Executive Committee. Ad Hoc or Task Force Committees are formed as needed to tackle special projects such as review of the Comprehensive Plan and MHA policies.



# WHO WE ARE

The Planning Commissioners have a wide range of professional expertise and live in neighborhoods across Seattle.

- Affordable housing
- Community engagement
- Real estate development
- Food systems
- Multi-modal transportation
- Environmental justice
- Environmental health planning
- Architecture & urban design
- Long-range planning
- Community development
- Strategic research
- Transit-oriented development
- Non-profit housing
- Small-business
- Community health
- Policy analysis & research



## HOUSING LEVY LETTER

- Supported renewal of the Housing Levy as it is critical to implementing the equitable growth strategies in the *Seattle 2035* Comprehensive Plan.
- Encouraged exploring other options for addressing the increasing crisis of affordability and homelessness in Seattle.

## SEATTLE 2035 COMPREHENSIVE PLAN REVIEW

- Completed a detailed review of the Mayor's Recommended Plan
- Included specific recommendations on the Growth Strategy, Land Use, Transportation, Housing, Community Well-Being, and Parks and Open Space elements
- Supported changes to the Future Land Use map
- Reiterated importance of inclusion of race and social equity as a core value
- Supported commitment to tracking and monitoring equity outcomes

## INDUSTRIAL LANDS

- Provided preliminary comments to help guide the scoping for an analysis on industrial lands as part of the Mayor's Task Force on Industrial Lands work plan.

## FREIGHT MASTER PLAN LETTER

- Supported the data-driven methodology.
- Supported inclusion of all transportation modes, and prioritization of important investments in freight mobility.

## MANDATORY HOUSING AFFORDABILITY

- MHA is a critical component of addressing affordability in Seattle.
- Provided preliminary concerns and considerations for OPCD as outreach efforts continue to refine MHA implementation.



## BACKYARD COTTAGES LETTER

- ADUs and DADUs increase the number and variety of housing options in single-family zones
- Expanding construction of DADUs could provide more flexibility and accessibility for new housing options throughout Seattle.
- Supported the work OPCD staff in identifying potential policy options that could remove barriers to permitting and constructing DADUs and ADUs.

## DOCKET SETTING

- Made recommendations on the docket items that require further review.
- Review of the docketed items is slated for 2017 and we will provide final comments at that time.

## COMMERCIAL AFFORDABILITY

- Offered considerations and comments on draft recommendations proposed by the Mayor's Commercial Affordability Advisory Committee for further evaluation.

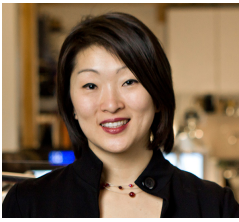
## EQUITABLE OUTREACH & ENGAGEMENT LETTER

- Supported the Mayor's commitment to inclusive and equitable outreach and engagement practices.
- Encouraged all city departments to work collaboratively with DON and to take a proactive role in advancing Seattle's model for community engagement.
- Provided key elements to include as they work towards developing and implementing engagement strategies.

# NUMBER OF MEETINGS BY TOPIC



# 2017 SEATTLE PLANNING COMMISSIONERS



**Grace Kim, Chair**

Grace is a founding partner of Schemata Workshop, a design practice that works with public, private, and non-profit clients on community focused projects.



**Tim Parham, Vice Chair**

Tim is a Real Estate Development Associate at Plymouth Housing Group; a non-profit organization that works to prevent homelessness while providing permanent, supportive homes.



**Michael Austin**

Michael is an Urban Designer with Perkins+Will, where he is involved in planning and design projects throughout the Pacific Northwest.



**Keiko Budech**

Keiko is this year's Get Engaged Member. She works at Sightline Institute, where she promotes research to decisionmakers and PNW media.



**Eileen Canola**

Eileen is a Senior Planner with Snohomish County Planning and Development Services, working on a variety of long range planning policies and development regulations.



**Lauren Craig**

Lauren was most recently Policy Counsel for Puget Sound Sage's equitable transit-oriented development, affordable housing, and land-use campaigns.



**Sandra Fried**

Sandra has worked at the Bill & Melinda Gates Foundation as a grantmaker working internationally to improve access to information through public libraries.



**David Goldberg**

David helped launch Smart Growth America and Transportation for America, national movements focused on smart growth reform.



**Kara Martin**

Kara is a partner and land use planner at Healthy Community Planning, a consulting firm that works with communities to create fair access to healthy food and grow a thriving local food economy.



**Jake McKinstry**

Jake is a Principal at Spectrum Development Solutions - a real estate advisory and development firm that approaches every project with the goal of developing workforce housing.



**Marj Press**

Marj owns a small restaurant in Capitol Hill and has over twenty years' experience analyzing the feasibility and environmental effects of transportation infrastructure projects.



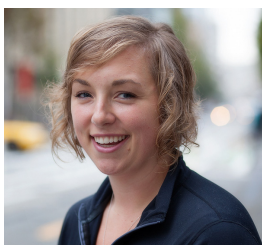
**Julio Sanchez**

Julio works at Puget Sound Clean Air as a Community Engagement Associate, where he combines his strengths of community engagement and environmental justice.



**David Shelton**

David is a transportation planner with Parsons Brinckerhoff, where he leads planning studies on multiple transportation modes, including light rail, streetcar, bus, ferries, pedestrians, bikes, and cars.



**Lauren Squires**

Laure is an urban planner at SvR Design Company. She has a background in sustainable design and planning, and has a passion for bicycle and pedestrian planning.



**Jamie Stroble**

Jamie works for King County's Climate Action Team as a lead on climate change related community engagement and partnership efforts, community resiliency, and integrating social justice into climate work.



**Patti Wilma**

Patti worked for the City of Bellevue Planning and Community Development Department with a focusing on urban design and land use issues.

## MISSION & DUTIES

The Seattle Planning Commission provides independent, objective analysis and advice to the Mayor, City Council and City Departments on an increasing variety of urban planning issues such as land use and zoning, transportation, and housing and community development. The Commission's work is framed by the Comprehensive Plan and its vision for Seattle into the 21st Century, and by a commitment to engaging citizens in the work of planning for and working to reach these goals.

## WHEN WE MEET

Our meetings are open to the public. Public comment is taken at our Full Commission Meetings.

**Full Commission Meetings**  
Second Thursday, 3:00pm-5:30pm  
Fourth Thursday, 7:30am-9:00am

**Housing & Neighborhoods Committee**  
First Thursday, 7:30am-9:00am

**Land Use & Transportation Committee**  
Third Thursday, 7:30am-9:00am

## WHO WE ARE

The Planning Commissioners have a wide array of professional expertise and live in neighborhoods across Seattle.

*Affordable housing  
Community engagement  
Real estate development  
Food systems  
Multi-modal transportation  
Environmental health planning  
Environmental justice  
Architecture & urban design*

*Long-range planning  
Community development  
Strategic research  
Transit-oriented development  
Non-profit housing  
Small-business  
Community health  
Policy analysis & research*

***The Seattle Planning Commission is an independent, 16-member advisory body appointed by the Mayor, City Council, and the Commission itself. The members of the Commission are volunteers who bring a diversity of perspectives to these roles.***

## CONTACT US

Seattle Planning Commission  
700 5th Ave Suite 2000; PO Box 94788 Seattle, WA. 98124-7088  
Tel: (206) 684-8694, TDD: (206) 684-8118, Fax: (206) 233-7883  
[www.seattle.gov/planningcommission](http://www.seattle.gov/planningcommission)